

MBOZI DISTRICT COUNCIL PROFILE

1.1 Location:-

Mbozi district is located at the south western part of Mbeya Region, between latitudes 8° and 9° 12' south of the Equator and Longitudes 32° 7' 30'' and 33° 2' 0'' East of the Greenwich Meridian. It shares borders with Mbeya district to its eastern part, Ileje district to the south, Momba district to its western part and Chunya district to the north.

1.2 Area and Administrative Subdivisions.

The District occupies a total area of 3,404 km² (340,400 Ha) generally classified as:-

i.	Arable land	255,300 Ha (75%)
ii.	Forest reserves.....	34,040 Ha (10%)
iii.	Settlement and other uses	44,252 Ha (13%)
iv.	Area Covered by water	6,808 Ha (2%)
	Total	340,400 Ha

The District is divided into 4 Divisions, 29 Wards 121 villages and 665 hamlets as shown in the table below:

Table No. 1: Divisions, Wards, Villages and Hamlets

DISTRICT	DIVISIONS	WARDS	VILLAGES	HAMLETS
MBOZI	4	29	121	665

1.3 PHYSICAL FEATURES & CLIMATIC CONDITIONS.

Mbozi District lies between 1,400 – 2,750 meters above the sea level. On average it receives rainfall between 1350 mm and 1550 mm per annum; while temperature ranges between 20°C to 28°C.

It is within a high plateau zone. Its topography is characterized by several hills with rivers and valuable valley for irrigation in between.

In this zone, three types of soil are observed. The volcanic soil and clay soil with a good mixture of sand and the alluvial loam and silt soil within the valleys. Though the vegetation cover has been widely removed through agricultural activities some natural vegetations is still observed especially along the river valleys. Its climate is characterized of moderate temperature and high rainfall. Due to these characteristics, major crops grown in this zone are coffee, maize, beans and banana, and to a small level Irish and sweet potatoes and paddy.

1.4 Population

It is a well established fact that a population is a source of labour for the production of goods and services, more importantly; it is also responsible for the consumption of various products. The size, structure, distribution and well-being of a population, among others are pre-requisites for sustainable economic development. Admittedly, population growth usually leads to an ever increasing demand for basic necessities such as food, water, energy and other natural resources for its survival and development, which subsequently increases depletion of natural resources.

Moreover, the growth and distribution of the population subsequently determine the demand for location and delivery of essential social services, such as education, health, water, transport and housing. This situation requires establishing a conducive environment for ensuring sustainable socio-economic development, which requires adopting alternative sources of energy and lifestyle without compromising the well-being of the current and future generations.

Experience has shown that, in most developing countries including Tanzania, reducing poverty in a society without environmental degradation is more difficult to achieve with a rapidly growing population of both human beings and livestock. To avert this potentially undesirable situation which often leads to environmental pollution and destruction and other unpredictable consequences, population growth should be controlled at a level which the environment can support.

According to the 2012 population census, Mbozi district had a population of 446,339 people of which 213,217 were males and 233,122 females The overall sex ratio is 91. The average household size was 4.3.

b) Distribution by Area.

The population distribution pattern in the District is by and large influenced by land fertility, climatic condition and availability of social economic services. This explains the reason for the concentration of people at the township centers and wards within the highland zones as shown by the following tables:

S/N	WARD	MALE	FEMALE	TOTAL
		2012	2012	2012
1	HASANGA			
2	HEZYA	5863	6685	12548
3	ICHENJEZYA	4575	3793	8368
4	IGAMBA	12896	12969	25865
5	IHANDA	10088	11267	21355

6	ILOLO	4043	7686	11729
7	ISANSA	8277	9845	18122
8	ITAKA	8704	9766	18470
9	KILIMAMPIMBI	0	0	0
10	MAGAMBA	0	0	0
11	MSIA	6096	6136	12232
12	MYOVIZI	7148	8590	15738
13	BARA	9591	10515	20106
14	IDIWILI	0	0	0
15	HASAMBA	2318	3355	5673
16	ISANDULA	6952	7597	14549
17	NANYALA	1467	1927	3394
18	SHIWINGA	4173	4784	8957
19	VWAWA	15436	15561	30997
20	WASA	5764	6294	12058
21	NAMBINZO	12610	13341	25951
22	NYIMBILI	5622	5733	11355
23	IYULA	15266	15518	30784
24	MLANGALI	8489	9166	17655
25	HALUNGU	13023	14128	27151
26	RUANDA	3771	4112	7883
27	ITUMPI	18666	19350	38016
28	IPUNGA	4401	4966	9367
29	MLOWO	17978	20038	38016
	JUMLA	213,217	233,122	446,339

c) Population Distribution by Age Groups:

When comparison is made between 2002 census and 2012 census, slight difference is revealed for cohort of age group. There was a slight increase in proportion age group 0-14 from 45% in 2002 to 45.3 in 2012; and a decrease in the proportion of age group 15-64 in 2012 from 52% in 2002 to 51% in 2012. The age group of 64 and above contributes 3.7% of Mbozi District population according to 2012 census.

d) Ethnic Group.

The major ethnic groups in terms of their number are Nyiha. They account for over 50% of the total population. The other ethnic groups are Nyamwanga, Wanda, Nyakyusa, Ndali, Lambya, Malila, and Safwa.

1.5 SOCIAL – ECONOMIC STATUS THE PRODUCTION SECTORS

This involves agriculture, livestock production and marketing, conservation and harvesting of existing natural resources and small industrial production.

a) Agriculture

Agriculture is the main economic activity in the district. 88% of its inhabitants depend on agriculture and livestock production that accounts for over 80% of the district earnings. Agricultural production is mainly done by small holder farmers (Peasants) of whom 50% use hand hoes, 40% use animal draught power and 10% using motorized equipment such as tractors. The status of crop production for the past 6 years is indicated in the table below.

Cash Crops:

Coffee is the main cash crop. Production of this crop used to increase over time. However of recent its production has almost remained static as shown in the table below.

Production (in tons) of cash crops:

YEAR	COFFEE
2011	42,109.99
2012	22,053.16
2013	21,023.51
2014	29,125.25
2015	30,307.71

The static state is caused by:

- (i) High dependence on rainfall which in recent years has been unreliable.
- (ii) Inadequate processing industries (pulperies) partially contributing to production of poor quality coffee which faces poor prices at the market and thus discouraging more production to farmers. Currently there are 77 pulperies (against the required amount of 150) in the district, of these, 29 are owned by private companies, 48 are owned by AMCOs and one is owned by a government institution. The requirement is to have 150 pulperies in the district
- (iii) Inability to access adequate agricultural inputs in time due to inadequate capital among famers. Before agricultural market liberalization inputs were secured through co – operative societies as loan and repaid after selling.
- (iv) Fluctuation of international coffee market which have affected the local market and producer prices.

Food crops

The main food crops produced in the district are maize, beans, potatoes, sweet potatoes, and beans. Production of these crops depends on availability of rainfall; hence it is unstable with a slightly increasing trend over years.

Fruit & Vegetables

A good number of fruits and vegetable are being produced, with varieties being limited by soil and climatic condition. Production is being affected by lack of proper market

infrastructures, lack of storage and processing facilities as well as poor husbandry practices. Improvements in irrigation storage and processing means can promote the production of fruits and vegetables with improvement of people health and poverty reduction.

Existing potentials under the agricultural sector:

(i) Existence of a good number of rivers and fertile valleys that is suitable for irrigation. The district has 3,400 Ha suitable for irrigation as distributed below.

Divisions	Iyula	Vwawa	Igamba	Total
Ha	2,100	630	670	3,400

ii) Existence of various agricultural institutional arrangements is potential towards supporting agricultural production and marketing improvements. These are co – operative unions which are mainly agricultural oriented, agricultural marketing co – operative societies, savings and credit co-operative societies. Inadequate fund (due to very low subventions from members), low managerial and other skills as well as weak transportation system are the major reasons which inhibit the competitiveness of these institutions. These results to problems for farmers not accessing lucrative markets or low price of agricultural products compared to the high cost of production.

b) Livestock:

The following table shows the number of livestock in the district:-

Estimated Livestock Population by ward, Mbozi District Council; 2015

Ward	Cattle	Goats	Sheep	Donkeys	Pigs	Chicken
HASANGA	1,588	932	61	8	806	4,419
HEZYA	5168	2117	345	0	735	126,000
ICHENJEZYA	95	18	0	0	347	5,031
IGAMBA	1488	1884	194	0	2699	52,112
IHANDA	2769	2153	156	2	478	17,873
ILOLO	314	151	0	0	271	2,516
ISANSA	5248	1981	227	5	1016	37,146
ITAKA	4,008	4,195	132	28	910	15,509
KILIMAMPIMBI	1893	1804	51	5	362	6,405
MAGAMBA	5824	3783	287	127	1120	15,690
MSIA	6,565	271	41	3	387	16,453
MYOVIZI	2911	1267	88	24	1229	62,300
BARA	4628	1707	128	135	1721	10,559
IDIWILI	3658	4736	797	7	1496	10,080
HASAMBA	998	245	19	0	132	2,281
ISANDULA	2010	1629	38	0	667	22,990
NANYALA	3424	2288	324	30	967	29,151

SHIWINGA	6827	380	53	0	504	20,342
VWAWA	2444	1372	25	0	1505	12,122
WASA	3710	1135	131	9	453	12,846
NAMBINZO	11919	7067	307	111	1397	20,246
NYIMBILI	8616	5978	222	0	1281	38,057
HALUNGU	6673	1587	231	12	942	29,634
IPUNGA	1211	1311	138	0	290	11,066
IYULA	3417	4195	312	52	1029	9,837
MLANGALI	4453	3790	1279	35	1160	12,029
RUANDA	3100	1181	119	48	660	15,696
ITUMPI	2792	2287	450	4	272	12,004
MLOWO	2990	487	64	4	4933	40,173
Total	110,741	61,931	6,219	649	29,769	670,567

In recent years, Mbozi district has observed a slight increase of improved dairy cattle and goats. Due to the existing climatic condition and population density; promoting dairy cattle, goats, pigs and chicken production is favourable in this high land area. Livestock development is being humered by existence of some livestock diseases especially the tick borne diseases and new castle disease which is a threat to livestock production. Hence any intervention should also address their control.

c) Other production activities.

This includes natural resources protections and harvesting, as well as small industrial activities.

i) Natural resources:

Status of Forest Cover by Ward, Mbozi District Council; 2015

Ward	Total Land Area (ha)	Natural forest reserve area (ha)	Forest plantation area (ha)	Game Reserve	Game Controlled Area (ha)
				Area (ha)*	
HASANGA	0	0	0	0	0
HEZYA	2478	2452	26	0	0
ICHENJEZYA	0	0	0	0	0
IGAMBA	2838	2816	27.5	0	0
IHANDA	227.5	227.5	0	0	0
ILOLO	0	0	0	0	0
ISANSA	969.7	949.7	20	0	0
ITAKA	518	518	0	0	0
IYULA	732.4	45	0	0	0
KILIMAMPIMBI	752.05	752.05	0	0	0
MAGAMBA	8031.25	8016.25	15	0	0
MSIA	176.5	176.5	0	0	0

MYOVIZI	88.5	0	88.5	0	0
BARA	1012	1012	0	0	0
IDIWILI	340.11	162.71	177.4	0	0
IPUNGA	132.6	130.6	2	0	0
RUANDA	1936	1927.95	8.5	0	0
HALUNGU	1323	103	70	0	0
HASAMBA	293.1	250.8	42.3	0	0
ISANDULA	454	0	0	0	0
MLANGALI	1323	103	70	0	0
NANYALA	4950	4950	0	0	0
SHIWINGA	5333	54	16	0	0
VWAWA	0	0	12	0	0
WASA	16429	532	5	0	0
MLOWO	46.5	20.1	26.4	0	0
ITUMPI	5112.2	5112	0.2	0	0
NAMBINZO	17323	17323	0	0	0
NYIMBILI	3137.1	2173.6	963.5	0	0
TOTAL	75956.51	49807.76	1570.3	0	0

ii) Industries

The district has two medium scale industry used for coffee processing and one maize mill for maize flower process and packing industry. Other industrial activities are very small in nature and are mainly carpentry, and oil seed extracting mills, milk processing, Iron smith, maize mills and rice hulls.

Since the district has high potential for agricultural and livestock activities, food-processing industries such as oil extraction and coffee processing units constitute potential areas for investment.

Type of Small Scale Industries by ward; Mbozi District Council; 2015

Ward	Type of Industry	Number of	Total no. of staff
		industries	
HASAMBA	Sunflower oil processing mill	1	2
	Service industry – garage	3	9
	Carpentry	2	5
	Food processing	0	0
	Maize milling	7	15
	Welding	2	4
ISANDULA	Sunflower oil processing mill	1	1

	Service industry – garage	0	0
	Carpentry	5	6
	Food processing	0	0
	Maize milling	11	20
	Welding	0	0
NANYALA	Sunflower oil processing mill	0	0
	Service industry – garage	0	0
	Carpentry	7	14
	Food processing	0	0
	Maize milling	5	10
	Welding	0	0
SHIWINGA	Sunflower oil processing mill	0	0
	Service industry – garage	0	0
	Carpentry	6	7
	Food processing	0	0
	Maize milling	15	22
	Welding	3	3
VWAWA	Sunflower oil processing mill	3	5
	Service industry – garage	4	20
	Carpentry	28	40
	Food processing	0	0
	Maize milling	21	28
	Welding	5	17
	Timber processing	4	10
WASA	Sunflower oil processing mill	0	0
	Service industry – garage	0	0
	Carpentry	9	9
	Food processing		
	Maize milling	26	26
	Welding		
NAMBINZO	Sunflower oil processing mill	4	4
	Service industry – garage	5	15

	Carpentry	40	80
	Food processing	0	0
	Maize milling	48	48
	Welding	2	2
NYIMBILI	Sunflower oil processing mill	0	0
	Service industry – garage	0	0
	Carpentry	4	4
	Food processing	0	0
	Maize milling	3	6
	Welding	0	0
IDIWILI	Carpentry	18	28
	Sunflower oil processing mill	1	2
	Service industry – garage	5	11
	Timber processing	1	3
	Welding	5	5
	Maize milling	26	34
KILIMAMPIMBI	Carpentry	0	0
	Maize milling	8	25
BARA	Carpentry	28	28
	Maize milling	62	79
	Welding	1	1
IGAMBA	Carpentry	35	40
	Service industry – garage	12	36
	Sunflower oil processing mill	9	18
	Welding	3	3
	Timber processing	3	6
	Blacksmith	5	10
	Maize milling	35	70
MYOVIZI	Sunflower oil processing mill	4	4
	Service industry – garage	3	6
	Food processing	0	0
	Welding	5	5
	Maize milling	25	25
	Timber processing	1	1

	Carpentry	11	20
MAGAMBA	Carpentry	10	18
	Maize milling	30	30
	Service industry – garage	0	0
IPUNGA	Sunflower oil processing mill	0	0
	Service industry – garage	0	0
	Carpentry	13	13
	Food processing	0	0
	Maize milling	20	20
	Welding	0	0
	Blacksmith	6	6
ICHENJEZYA	Sunflower oil processing mill	4	5
	Service industry – garage	12	63
	Carpentry	9	19
	Food processing	0	0
	Maize milling	9	12
	Blacksmith	5	7
	Welding	6	11
ITAKA	Sunflower oil processing mill	1	1
	Service industry – garage	0	0
	Carpentry	27	33
	Food processing	0	0
	Maize milling	45	45
	Welding	1	1
	Blacksmith	7	7
ILOLO	Sunflower oil processing mill	0	0
	Service industry – garage	6	15
	Carpentry	6	6
	Food processing	0	0
	Maize milling	7	7
	Welding	8	8
MLOWO	Sunflower oil processing mill	11	22
	Service industry – garage	22	117

	Carpentry	20	43
	Food processing	3	10
	Maize milling	45	85
	Welding	17	20
HEZYA	Carpentry	8	14
	Maize milling	0	0
	Service industry – garage	1	2
	Food processing	0	0
	Welding	0	0
	Maize milling	18	30
IHANDA	Sunflower oil processing mill	8	8
	Service industry – garage	8	15
	Carpentry	26	38
	Food processing	0	0
	Maize milling	28	38
	Welding	8	13
	Timber processing	2	2
MLANGALI	Carpentry	5	5
	Food processing	3	10
	Maize milling	14	16
HALUNGU	Sunflower oil processing mill	0	0
	Service industry – garage	0	0
	Carpentry	20	28
	Food processing	0	0
	Maize milling	31	43
	Welding	2	4
	Blacksmith	6	6
WASA	Sunflower oil processing mill	0	0
	Service industry – garage	0	0
	Carpentry	9	9
	Maize milling	26	26
ISANSA	Sunflower oil processing mill	4	8
	Service industry – garage	3	6
	Carpentry	1	4

	Maize milling	28	40
	Welding	4	6
MSIA	Sunflower oil processing mill	1	2
	Service industry – garage	0	0
	Carpentry	7	21
	Maize milling	17	18
	Blacksmith	6	10
RUANDA	Sunflower oil processing mill	3	7
	Service industry – garage	0	0
	Carpentry	18	20
	Food processing	0	0
	Maize milling	15	20
	Welding	3	3
ITUMPI	Carpentry	15	19
	Maize milling	27	27
	Blacksmith	13	26
	Wafinyanzi	5	5
HASANGA	Sunflower oil processing mill	0	0
	Service industry – garage	2	5
	Carpentry	2	3
	Maize milling	9	16
	Welding	4	8
	Timber processing	1	3
	Other		
	Type of small		
	Industry		
	1:00		
	2:00		
	3:00		
	4:00		
Total		1341	2100

iii) Marketing

Marketing is an area in which smallholder farmers have limited information, knowledge, skills and exposure. Inadequate or even lack of entrepreneurship skills to the majority of the micro entrepreneurs which encompasses almost all farmers (peasants) and to some small entrepreneurs, highly limited friendly soft loan issuing financial (micro) institution network, aggravates the situation towards running competitive, viable businesses. This challenges the council to strengthen road network, co-operative societies, Micro financial institution network, and spearhead information, knowledge and skills in marketing and entrepreneurship.

1.6 ECONOMIC SERVICES

Existing economic services include roads, railway, electricity and Telecommunication services.

a) Roads and Railway service

The district has a road network of 1538.6 kms classified as shown below:

Length of Road Network by ward (in km), Mbozi Council, 2015

Ward	Type (in km)				
	Trunk	Regional	District/Urban	Feeder	Total
HASANGA	0	0	5.5	22.5	28
HEZYA	0	8	16	21.9	45.9
ICHENJEZYA	0	0	1.3	3.4	4.7
Igamba	0	14	28	112.5	154.5
ILOLO	0	0	5	8	13
Isansa	0	11	11	61	83
IHANDA	6.6	4.5	16.5	19	46.6
Itaka	0	16.5	74	39.5	130
Kilimampimbi	0	0	8	32	40
MAGAMBA		27		73.52	100.52
MSIA			22.8	51.79	74.59
MYOVIZI	7	3	10	31	51
BARA	0	20	13	193	226
IDIWILI			46	79.5	125.5
HASAMBA	0	10	16.7	9.8	36.5
ISANDULA	4.5	0	16	60	80.5
NANYALA	8	0	7	31	46
SHIWINGA	0	3.25	21	42	66.25
VYWAWA	7.8	4	19.83	11.5	43.13
WASA	0	25	6	50	81
NAMBINZO	0	12	94		106

NYIMBILI	0	16	0	45	61
HALUNGU	0	10	17	38	65
IPUNGA	0	0	11	19.5	30.5
IYULA	0	18.8	16.7	97	113.7
MLANGALI	0	10	23.1	46.6	79.7
RUANDA	9	7.1	11.2	23	50.3
					0
					0
Total	42.9	201.35	516.63	1222.01	1982.89

Source: Works Dept.

Passability of Road Network by ward, Mbozi District Council; 2015

Ward	Condition of Network Throughout the Year in km				Percentage Passable
					(Columns 2 +3)
	Passable Throughout the Year	Passable a Greater Part of the Year	Not Passable Most of the Year	Total Road Network	
HASANGA	0	0	0	0.00	#DIV/0!
HEZYA	9	3	33.9	45.90	26.14
ICHENJEZYA	0	1.7	3.06	4.76	35.71
Igamba	137	17.5	0	154.50	100.00
IHANDA	37.1	9.5	0	46.60	100.00
ILOLO	2.5	2.5	8	13.00	38.46
Isansa	11	11	61	83.00	26.51
Itaka	13	43	74	130.00	43.08
KILIMAMPIMBI	0	1	39	40.00	2.50
MAGAMBA	30	27	43.52	100.52	56.71
MSIA	55.7	23.39	6	85.09	92.95
MYOVIZI	13	14	19.5	46.50	58.06
BARA	19	45	162	226.00	28.32
Idiwili	10	36	79.5	125.50	36.65
HASAMBA	13.5	17.3	5.7	36.50	84.38
ISANDULA	10.5	70.5	0	81.00	100.00
NANYALA	21	4	46	71.00	35.21
SHIWINGA	3	63	0	66.00	100.00
VYWAWA	43.13	0	0	43.13	100.00
WASA	25	0	31	56.00	44.64
NAMBINZO	59	14	33	106.00	68.87

NYIMBILI	16	16	48	80.00	40.00
HALUNGU				0.00	#DIV/0!
IPUNGA				0.00	#DIV/0!
IYULA				0.00	#DIV/0!
MLANGALI				0.00	#DIV/0!
RUANDA				0.00	#DIV/0!
				0.00	#DIV/0!
				0.00	#DIV/0!
Total	528.43	419.39	693.18	1641.00	57.76

Length of Road Network by Type of Road Surface by ward; Mbozi DC; 2015

Ward	Type of Surface (in Km)			
	Tarmac	Gravel	Earth	Total
HASANGA				0
HEZYA	0	14	31.9	45.9
ICHENJEZYA	1.6	0	3.16	4.76
Igamba	0	32	122.5	154.5
IHANDA	6.6	8	32	46.6
ILOLO	2.5	2.5	8	13
Isansa	0	11	72	83
Itaka	0	22.5	107.5	130
Kilimampimbi	0	0	40	40
MAGAMBA		27	73.52	100.52
MSIA		23.91	62.08	85.99
MYOVIZI	7	2	44	53
BARA		30	196	226
Idiwili			125	125
HASAMBA	0	13	0	13
ISANDULA	10.5	70.5	0	81
NANYALA	8	0	0	8
SHIWINGA	0	3.25	0	3.25
VYWAWA	11.7	19.83	12.5	44.03
WASA	0	0	0	0
NAMBINZO	0	0	0	0
NYIMBILI	0	0	34257	34257
HALUNGU	0	12.5	52.5	65
IPUNGA	0	9	21.5	30.5
IYULA	0	12 . 8	111 . 7	0

MLANGALI	0	27	52.7	79.7
RUANDA	9	13.3	28	50.3
				0
				0

b) Electricity:

Vwawa and Mlowo town centre are connected to the National grid together with six villages of Ihanda, Ukwile, Iyula, Malonji, Mahenje, Ruanda and Igamba.

Other sources of power to very small population are solar energy; and biogas. The majority of the population uses firewood, charcoal and fuel lamps as their source of energy.

c) Telecommunication

Vwawa town is connected to STD. Likewise various villages and township centres of Mlowo and Vwawa which are along and near to the Tanzania – Zambia highway road enjoy the services of cell phones of VODACOM, AIRTEL, TIGO, ZANTEL, HALOTEL and TTCL (Mobile).

1.7 SOCIAL SERVICES.

The main social services provided in the district are Education, Health and Water.

1.7.1. Education.

a) Pre-Primary Education

Number of Pre-Primary School classes by Ownership and by ward, Mbozi DC; 2011-2015

Ward	2011		2012		2013		2014		2015	
	Pub	Pri.	Pub	Pri.	Pub	Pri.	Pub	Pri.	Pub	Pri.
HASANGA	2	0	2	0	3	0	3	0	3	0
HEZYA	4	0	4	0	4	0	5	0	5	0
ICHENJEZYA	1	1	1	1	1	1	1	1	1	1
Igamba	7		7		7		7		7	
IHANDA	7	0	7	0	7	0	7	0	8	0
ILOLO	1	1	1	1	1	1	1	1	1	1
Isansa	6	0	6	0	6	0	6	0	6	0
Itaka	7	1	7	1	7	1	7	1	7	1
Kilimampimbi	4	0	4	0	4	0	4	0	4	0
MAGAMBA	5	0	5	0	5	0	5	0	5	
MSIA	4	0	4	0	4	0	4	0	4	0
MYOVIZI	6		7		7		7		7	

BARA	6	0	7	0	7	0	7	0	8	0
Idiwili	5	0	5	0	6	0	6	0	6	0
HASAMBA	3	0	3	0	3	0	3	0	3	0
ISANDULA	5	0	5	0	5	0	5	0	5	0
NANYALA	5		5		5		5		5	
SHIWINGA	4		4		4		0		4	
VWAWA	4	0	4	0	4	0	4	0	4	0
WASA	3	0	4	0	4	0	4	0	4	0
NAMBINZO	6	0	6	0	7	0	7	0	7	0
NYIMBILI	5	0	5	0	5	0	7	0	8	0
HALUNGU	7		7		7		7		7	
IPUNGA	5		5			5	5		5	
IYULA	8		8		8		8		8	
MLANGALI	7		7		7		7		7	
Ruanda	4	0	4	0	4	0	4	0	4	0
MLOWO	7	0	7	1	8	1	8	1	8	1
ITUMPI	3	0	4	0	5	0	5	0	5	0
Total	141	3	145	4	145	9	149	4	156	4

N.B:

Pub = Public

Pri. = Private

Pre-Primary Schools Total Enrolment by Ownership and by Ward, Mbozi Council; 2011 – 2015

Ward	2011		2012		2013		2014		2015	
	Pub	Pri.	Pub	Pri.	Pub	Pri.	Pub	Pri.	Pub	Pri.
HASANGA	165	0	156	0	239	0	229	0	234	0
HEZYA	220	0	243	0	257	0	225	0	208	0
ICHENJEZYA	98	32	180	52	151	56	234	68	196	27
Igamba	654		652		731		797			
IHANDA	483	0	517	0	538	0	677	0	705	0
ILOLO	41		64		54		66		74	
Isansa	377	0	377	0	373	0	449	0	524	0
Itaka	508	45	477	58	510	48	554	40	588	30
Kilimampimbi	226	0	191	0	243	0	276	0	203	0
MAGAMBA	496	0	462	0	287	0	474	0	494	0
MSIA	291	0	489	0	259	0	287	0	371	0
MYOVIZI	437		441		478		506		497	
BARA	546	0	677	0	627	0	587	0	833	0
Idiwili	375	0	471	0	503	0	444	0	384	0
HASAMBA	239	0	192	0	146	0	169	0	167	0
ISANDULA	325	0	300	0	371	0	412	0	367	0

NANYALA	124		182		184		196		194	
SHIWINGA	361		358		389		359		346	
VWAWA	529	0	421	0	366	0	451	0	491	0
WASA	555	0	464	0	401	0	423	0	541	0
NAMBINZO	570	0	430	0	470	0	715	0	550	0
NYIMBILI	248	0	297	0	263	0	403	0	406	0
HALUNGU	513		502		555		568		816	
IPUNGA	206		240			218	300		264	
IYULA	552		544		600		702		725	
MLANGALI	629		617		629		685		643	
RUANDA	225	0	202	0	276	0	346	0	277	0
MLOWO	568	0	640	0	734	0	788	0	989	0
ITUMPI	240	0	301	0	344	0	306	0	382	0
Total	10801	77	11087	110	10978	322	12628	108	12469	57

b) Primary Education

Number of Primary Schools by Ownership and by ward; Mbozi Council; 2011 – 2015

Ward	2011		2012		2013		2014		2015	
	Pub	Pri.	Pub	Pri.	Pub	Pri.	Pub	Pri	Pub	Pri
HASANGA	6	0	7	0	7	0	7	0	8	0
HEZYA	7	0	7	0	7	0	7	0	7	0
ICHENJEZYA	3	0	3	0	3	0	3	0	3	0
Igamba	2	0	3	0	3	0	3	0	3	0
IHANDA	4	0	4	0	4	0	5	0	5	0
ILOLO	1	1	1	1	1	1	1	1	1	1
Isansa	6	0	6	0	6	0	6	0	6	0
Itaka	7	0	7	0	7	0	7	0	7	0
Kilimampimbi	7	0	7	0	7	0	8	0	8	0
MAGAMBA	1	0	1	0	1	0	1	0	1	0
MSIA	5	0	5	0	5	0	5	0	5	0
MYOVIZI	5	0	5	0	5	0	5	0	5	0
BARA	6	0	6	0	6	0	6	0	6	0
Idiwili	7	1	7	1	7	1	7	1	7	1
HASAMBA	5	0	5	0	5	0	5	0	5	0
ISANDULA	8	0	8	0	8	0	8	0	8	0
NANYALA	4	0	4	0	4	0	4	0	4	0
SHIWINGA	4	0	5	0	5	0	5	0	5	0
VWAWA	7	0	7	0	7	0	7	0	7	0

WASA	7	0	7	1	8	1	8	1	8	2
NAMBINZO	4	0	4	0	4	0	5	0	5	0
NYIMBILI	6	0	7	0	7	0	7	0	7	0
HALUNGU	6	0	6	0	6	0	7	0	7	0
IPUNGA	6	0	6	0	6	0	6	0	6	0
IYULA	8	0	8	0	8	0	8	0	8	0
MLANGALI	4	0	4	0	4	0	4	0	4	0
RUANDA	4	0	4	0	4	0	4	0	4	0
MLOWO	5	0	6	0	6	0	6	0	6	0
ITUMPI	4	0	4	0	4	0	4	0	4	0
Total	149	2	154	3	155	3	159	3	160	4

Pub:Public Pri:Private

Standard I Enrolment by School Ownership and by Ward; Mbozi Council; 2011-2015

Ward	2011		2012		2013		2014		2015	
	Pub	Pri.	Pub	Pri.	Pub	Pri.	Pub	Pri	Pub	Pri
HASANGA	281	0	458	0	425	0	498	0	562	0
HEZYA	229	0	276	0	492	0	301	0	265	0
ICHENJEZYA	266	46	187	52	176	58	142	64	211	90
Igamba	757		723		719		672		642	
IHANDA	591	0	670	0	679	0	604	0	667	0
ILOLO	118		123		180		188		114	
Isansa	611	0	578	0	616	0	678	0	698	0
Itaka	674	31	610	31	648	40	679	20	657	34
Kilimampimbi	246	0	263	0	250	0	359	0	287	0
MAGAMBA	443	0	588	0	542	0	493	0	459	0
MSIA	492	0	355	0	464	0	654	0	693	0
MYOVIZI	468		521		522		598		469	
BARA	678	0	570	0	593	0	678	0	717	0
Idiwili	436	0	479	0	531	0	501	0	531	0
HASAMBA	169	0	192	0	152	0	177	0	114	0
ISANDULA	295	0	381	0	343	0	398	0	368	0
NANYALA	275		250		230		285		298	
SHIWINGA	330		301		253		257		299	
VWAWA	914	0	905	0	914	0	902	0	896	0
WASA	550	0	615	0	533	0	635	0	515	0
NAMBINZO	781	0	828	0	605	0	874	0	879	0

NYIMBILI	499	0	464	0	502	0	501	0	523	0
HALUNGU	805		714		764		798		769	
IPUNGA	410		387		344	0	288		299	
IYULA	593		577		648		676		589	
MLANGALI	634	0	665	0	703		701		652	0
RUANDA	287	0	324	0	325	0	326	0	292	0
MLOWO	1168	0	1047	58	1252	42	1231	45	1356	81
ITUMPI	439		464		411		379		355	
Total	14439	77	14515	141	14816	140	15473	129	15176	205

Pub: Public Pri: Private

Primary schools Facilities

Availability of Classrooms in Public Primary Schools by Ward; Mbozi Council; 2015

Ward	Number of Schools	Total Pupils	Available Classrooms	Classroom Pupils Ratio (CPR)	Required Classrooms	Deficit of Classrooms	
						Number	Percent
HASANGA	8	3277	48	68.27	82	34	
HEZYA	7	5028	68	73.94	94	26	28
ICHENJEZYA	3	804	22	36.55	24	2	8
Igamba	3	1,839	31	59.32	51	20	39%
IHANDA	5	1558	36	43.28	36	19	39%
ILOLO	1	1194	17	70.24	27	10	37
Isansa	6	2501	44	56.84	56	12	
Itaka	7	4706	72	65.36	97	25	
KILIMAMPIMBI	8	3444	64	53.81	80	20	25
MAGAMBA	1	715	10	71.50	16	6	38
MSIA	5	1814	33	54.97	0	0	0
MIYOVIZI	5	1574	36	43.72	35	0	0
BARA	6	2678	54	49.59	67	13	19
Idiwili	7	3186	48	66.38	99	51	
HASAMBA	5	2541	42	60.50	56	14	25
ISANDULA	8	3217	63	51.06	76	13	17%
NANYALA	4	1158	26	44.54	25	0	
SHIWINGA	5	2542	35	72.63	55	20	
VWAWA	7	3411	59	57.81	76	17	22
WASA	8	7211	83	86.88	164	81	49
NAMBINZO	5	2,364	36	65.67	53	17	

NYIMBILI	7	2824	50	56.48	69	19	
HALUNGU	7	4863	34	143.03	101	67	66
IPUNGA	6	1867	47	39.72	49	2	4%
IYULA	8	2780	55	50.55	62	7	11
MLANGALI	4	1910	29	65.86	35	14	40
RUANDA	4	1598	34	47.00	40	7	18
MLOWO	6	4344	74	58.70	99	30	30
ITUMPI	4	2315	36	64.31	58	22	38
Total	160	79263	1286	61.64	1782	568	454.99

Availability of Pit Latrine in Public Primary Schools by Ward, Mbozi Council, 2015

Ward	Total Pupils		Available Pit Latrine		Pit Latrine Pupils Ratio		Required Pit Latrine		Deficit of Pit Latrine for	
	Boys	Girls	Boys	Girls	Boys	Girls	Boys	Girls	Boys	Girls
HASANGA	1537	1740	43	62	0.03	0.04	61	87	18	25
HEZYA	2404	2624	40	64	0.02	0.03	96	131	56	67
ICHENJEZYA	378	426	13	15	0.03	0.04	15	21	2	6
IGAMBA	856	983	13	18	0.02	0.02	34	49	21	31
IHANDA	755	803	17	19	0.02	0.03	30	40	13	21
ILOLO	616	578	8	10	0.01	0.02	25	29	17	19
ISANSA	1163	1338	42	55	0.04	0.05	47	67	5	12
Itaka	2239	2467	48	51	0.02	0.02	90	123	42	72
KILIMAMPIMBI	1648	1796	34	46	0.02	0.03	66	90	32	44
MAGAMBA	306	409	4	4	0.01	0.01	12	20	8	16
MSIA	854	960	21	23	0.02	0.03	34	48	13	25
MIYOVIZI	739	835	22	36	0.03	0.05	30	42	8	6
BARA	1338	1340	41	51	0.03	0.04	54	67	13	16
IDIWILI	1593	1593	30	32	0.02	0.02	64	80	34	48
HASAMBA	1290	1251	24	30	0.02	0.02	52	63	28	33
ISANDULA	1577	1640	72	72	0.05	0.05	63	82	-9	10
NANYALA	569	589	12	26	0.02	0.05	23	29	11	3
SHIWINGA	1181	1361	179	211	0.15	0.18	47	68	-132	-143
VWAWA	1615	1796	33	41	0.02	0.03	65	90	32	49
WASA	3475	3736	42	51	0.01	0.01	139	187	97	136
NAMBINZO	1142	1222	32	32	0.03	0.03	46	61	14	29
NYIMBILI	1365	1459	27	29	0.02	0.02	55	73	28	44
HALUNGU	2374	2489	31	34	0.01	0.01	95	124	64	90

IPUNGA	894	973	39	39	0.04	0.04	36	49	-3	10
IYULA	1362	1418	20	23	0.01	0.02	54	71	34	48
MLANGALI	942	968	27	30	0.03	0.03	38	48	11	18
RUANDA	774	824	24	21	0.03	0.03	31	41	7	20
MLOWO	2040	2304	38	42	0.02	0.02	82	115	44	73
ITUMPI	1098	1217	22	22	0.02	0.02	44	61	22	39
Total	38124	41139	998	1189	0.03	0.03	1524.96	2056.95	526.96	867.95

Availability of Primary School Teachers' Houses by Ward, Mbozi Council; 2015

Ward	Require d Teacher s	Number of Availabl e Teacher s	Actual Requiremen t of Houses	Availabl e Houses	Deficit of Houses		Surplus / Deficit Based on HTR	Percent of Deficit Based on HTR
					No.	Percen t		
HASANGA	73	61	73	48	25	34.2	48	34.2
HEZYA	129	87	129	38	91	70.5	38	70.5
ICCHENJEZYA	35	34	35	7	28	80.0	7	80.0
Igamba	57	62	57	2	55	96.5	55	96.5
IHANDA	46	27	50	30	20	40.0	30	40.0
ILOLO	43	50	43	0	43	100.0	0	100.0
Isansa	91	55	91	54	37	40.7	54	40.7
Itaka	139	122	146	46	100	68.5	46	68.5
KILIMAMPIM BI	110	104	110	24	86	78.2	24	78.2
MAGAMBA	21	29	21	2	19	90.5	2	90.5
MSIA	40	51	40	24	16	40.0	24	40.0
MIYOVIZI	57	46	57	25	32	56.1	25	56.1
BARA	98	75	98	44	54	55.1	44	55.1
Idiwili	112	67	112	52	60	53.6	52	53.6
HASAMBA	67	48	64	43	21	32.8	43	32.8
ISANDULA	120	85	120	40	80	66.7	40	66.7
NANYALA	39	34	34	15	19	55.9	15	55.9
SHIWINGA	76	61	76	32	44	57.9	32	57.9
VWAWA	91	80	91	46	45	49.5	46	49.5
WASA	232	232	232	10	222	95.7	10	95.7
NAMBINZO	65	51	65	18	47	72.3	18	72.3
NYIMBILI	96	107	96	27	69	71.9	27	71.9
HALUNGU	138	73	138	48	90	65.2	48	65.2

IPUNGA	64	61	64	22	42	65.6	22	65.6
IYULA	93	68	93	63	30	32.3	63	32.3
MLANGALI	58	37	58	28	30	51.7	28	51.7
RUANDA	43	60	46	21	39	65.0	21	65.0
MLOWO	139	162	139	4	135	97.1	4	97.1
ITUMPI	76	41	76	35	41	53.9	35	53.9
Total	2448	2070	2468	848	1620	65.6	901	1837.37818

Availability of Desks in Public Primary Schools Ward, Mbozi DC; 2015

Ward	Total Pupils	Available Desks	Desk Pupils Ratio	Required Desks	Deficit of Desks		Deficit Based on DPR	Percent of Deficit Based on DPR
					No.	Percent		
HASANGA	3277	890		1092	202	18.5		
HEZYA	5028	1330	1330	1:04	0	0.0	346	21
ICHENJEZYA	804	424	1:02	268	0	0.0	0	0
Igamba	1839	562	1;4	614	52	8.5	52	8
IHANDA	1558	504	64	665	161	24.2		
ILOLO	1194	400	1:03	398	0	0.0	0	0
Isansa	2501	792		834	42	5.0		
Itaka	4706	1406	1:03	1176.5	0	0.0		
KILIMAMPIMBI	3444	1183	1:03	1282	99	7.7	76	6
MAGAMBA	715	143	5	209	66	31.6	66	32
MSIA	1814	410		604	194	32.1	582	32
MYOVIZI	1574	540	1:03	525	0	0.0	0	0
BARA	2678	938	1:03	899	0	0.0	0	0
IDIWILI	3186	863		1075	212	19.7		
HASAMBA	2541	844	1;3	847	3	0.4	3	0.4
ISANDULA	3217	1097		1074	0	0.0	23	2
NANYALA	1158	393		386	0	0.0		
SHIWINGA	2542	636		860	224	26.0		
VWAWA	2824	1073		1137	64	5.6	64	6
WASA	3411	1631	1:04	2382	751	31.5	751	32
NAMBINZO	7211	825		42	0	0.0		
NYIMBILI	2364	1029		982	0	0.0		
HALUNGU	4863	1033	1:04	1331	298	22.4	0	0
IPUNGA	1867	414	1:04	592	178	30.1		
IYULA	2780	795	1:03	927	132	14.2	132	14
MLANGALI	1910	521	1:04	630	109	17.3	109	21
RUANDA	1598	639	1:03	533	0	0.0		

MLOWO	4344	1241	1:04	1462	221	15.1	221	15
ITUMPI	2315	699	1:03	772	73	9.5	73	10

Availability of Public Primary School's Teachers (Grade IIIB/C, IIIA, Diploma and Degree, Masters) by Ward, Mbozi Council; 2015

Ward	Total Pupils	Teachers Required	Available Teachers	Deficit	Percent of Deficit	Teacher Pupils Ratio	Deficit Based on TPR	Percent Deficit Based on TPR
HASANGA	3277	73	61	12	16.44	1:54	9	84
HEZYA	5028	129	87	42	32.56	1:58	42	33
ICHENJEZYA	804	35	34	1	2.86	1:24	1	3
Igamba	1839	67	62	5	7.46	1; 37	7	10
IHANDA	1558	48	27	21	43.75			
ILOLO	1194	43	50		0.00	1:28	0	0
Isansa	2501	91	55	36	39.56	1:56	36	40
ITAKA	4706	103	122		0.00	1:46		
KILIMAMPIMBI	3444	110	104	6	5.45	1:33	6	5
MAGAMBA	715	21	29		0.00	25	0	0
MSIHA	1814	40	51		0.00	1:40	0	0
MYOVIZI	1574	57	46	11	19.30	1:34	0	0
BARA	2678	95	75	20	21.05	1:36	23	23
IDIWILI	3186	112	67	45	40.18	1:48	40	40
HASAMBA	2541	67	48	19	28.00	1:53	19	28
ISANDULA	3217	120	85	35	29.17	1:38	35	29
NANYALA	1158	39	34	5	12.82	1:34		
SHIWINGA	2542	76	61	15	19.74	1	0	1
VWAWA	2824	91	80	11	12.09	1:43	11	12
WASA	3411	232	232	0	0.00	1;31	0	0
NAMBINZO	7211	65	51	14	21.54	1:56	16	25
NYIMBILI	2364	96	107		0.00	1:30	11	11
HALUNGU	4863	138	73	65	47.10	1:51		
IPUNGA	1867	64	61	3	4.69	1:31		
IYULA	2780	93	68	25	26.88	0.08	25	27%
MLANGALI	1910	58	37	21	36.21	1:51	21	57
RUANDA	1598	43	60		0.00	1:30	0	0
MLOWO	4344	139	162		0.00	0:00	0	0
ITUMPI	2315	76	41	35	46.05	1:56	46	46
Total	79263	2421	2070	447	512.9	54.6	348	447.27

Accessibility of Water in Public Primary Schools by Ward, Mbozi District Council, 2013 and 2015

Ward	Total No. of Schools	2013			Total No. of Schools	2015		
		No. of Primary. Schools with working				No. of Primary Schools with working		
		Water Tanks	Water wells	Tape water		Water Tanks	Water wells	Tape water
HASANGA	7	0	9	0	8	0	12	0
HEZYA	7		2		7		2	
ICHENJEZYA	3	0	0	1	3	0	0	1
Igamba	3	0	0	2	3	0	0	2
IHANDA	4	1	2	2	5	1	2	2
ILOLO	1	0	0	1	1	0	0	1
Isansa	6	0	0	0	6	0	0	0
Itaka	7	0	7	1	7	0	7	1
KILIMAMPIMBI	7	0	2	0	8	0	2	0
MAGAMBA	1		1		1		1	
MSIA	5	0	0	0	5	0	0	0
MYOVIZI	5	0	5	0	5	0	5	0
BARA	6	0	2	0	6	0	1	2
Idiwili	7	0	2	0	7	1	2	0
HASAMBA	5	0	4	0	5	0	4	0
ISANDULA	8	0	7	1	8	0	7	1
NANYALA	4	0	4	0	4	0	4	0
SHIWINGA	5	1	0	1	5	1	0	1
VWAWA	7	0	3	0	7	0	4	0
WASA	8	0	1	1	8	0	1	1
NAMBINZO	4	0	0	1	5	0	0	1
NYIMBILI	7	0	0	0	7	0	0	0
HALUNGU	6	0	3	3	7	0	4	3
IPUNGA	6		2	2	6		2	2
IYULA	8	1	5	0	8	1	5	0
MLANGALI	4	1	3	1	4	1	3	1
RUANDA	4	0	4	0	4	0	4	0
MLOWO	6	1	1	2	6	1	1	2
ITUMPI	4	0	0	0	4	0	0	0
Total	155	5	69	19	160	6	73	21

Special Education

Number of Pupils enrolled with their Type of impairment; Mbozi Council; 2013 and 2015

Type of Impairment	Number of pupils enrolled					
	2013			2015		
	M	F	Total	M	F	Total
PHYSICAL IMPAIRMENT	4	1	5	6	5	11
ALBINISM	1	0	1	3	0	3
HEARING IMPAIRMENT	5	2	7	6	4	10
MENTAL IMPAIRMENT	19	7	26	31	21	52
			0			0

(c) Secondary schools

Number of Secondary Schools by Ownership and Ward, Mbozi Council; 2011-2015

Ward	2011		2012		2013		2014		2015	
	Pub	Pri.	Pub	Pri.	Pub	Pri.	Pub	Pri	Pub	Pri
HASANGA	1	1	1	1	1	1	1	1	1	1
HEZYA	1	0	1	0	1	1	1	1	1	1
ICHENJEZYA	0	0	0	0	0	0	0	0	0	0
Igamba	3	1	3	1	3	1	3	1	3	1
IHANDA	1	0	1	0	1	1	1	1	1	1
ILOLO	1	0	1	0	1	0	1	0	1	0
Isansa	1	1	1	1	1	1	1	1	1	1
Itaka	2	1	2	1	2	1	2	1	2	1
KILIMAMPIMBI	1	0	1	0	1	0	1	0	1	0
MAGAMBA	1	0	1	0	1	0	1	0	1	0
MSIA	1	0	1	0	1	0	1	0	1	0
MYOVIZI	1	1	1	1	1	1	1	1	1	1
Bara	2	0	2	0	2	0	2	0	2	0
Idiwili	1	1	1	1	1	1	1	1	1	1
HASAMBA	1	1	1	1	1	1	1	1	1	1
ISANDULA	1	0	1	0	1	0	1	0	1	1
NANYALA	1	0	1	0	1	0	1	0	1	0
SHIWINGA	1	0	1	0	1	0	1	0	1	0
VYWAWA	1	2	1	2	1	2	1	2	1	2
WASA	2	0	2	0	2	0	2	0	2	0
NAMBINZO	2	0	2	0	2	0	2	0	2	0

NYIMBILI	1	0	1	0	1	0	1	0	1	0
HALUNGU	3	0	3	0	3	0	3	0	3	0
IPUNGA	1	0	1	0	1	0	1	0	1	0
IYULA	2	1	2	1	2	1	2	1	2	1
MLANGALI	2	0	2	0	2	0	2	0	2	0
RUANDA	2	0	2	0	2	0	2	0	2	0
ITUMPI	1	0	1	0	1	0	1	0	1	0
MLOWO	2	3	2	3	2	3	2	3	2	3
Total	40	13	40	13	40	15	40	15	40	16

Special Education

Number of Students enrolled in Secondary Schools with their Type of impairment, Mbozi Council; 2013 and 2015

Type of Impairment	Number of Students enrolled					
	2013			2015		
	Boys	Girls	Total	Boys	Girls	Total
Physical	5	1	6	2	2	4
Blind	0	0	0	0	0	0
Albinism	0	0	0	0	0	0
Hearing	0	0	0	0	0	0
Mental	0	0	0	0	0	0
	0	0	0	0	0	0

Secondary school Facilities

Availability of Public Secondary School's Teachers by Ward, Mbozi Council; 2015

Ward	No. of Schools	Requirement of teachers	Available Teachers	Deficit of Teachers
HASANGA	1	31	49	0
HEZYA	1	11	16	
ICHENJEZYA	0	0	0	0
Igamba	3	39	71	
IHANDA	1	38	38	0
ILOLO	1	27	41	7
Isansa	1	28	29	0
Itaka	2	29	30	
KILIMAMPIMBI	1	11	15	
MAGAMBA	1	21	37	

MSIA	1	26	19	
MYOVIZI	1	21	37	
Bara	2	45	30	
Idiwili	1	26	21	
HASAMBA	1	23	38	
ISANDULA	1	13	23	1
NANYALA	1	23	26	
SHIWINGA	1	39	31	8
VYWAWA	1	79	64	15
WASA	2	40	44	6
NAMBINZO	2	29	41	
NYIMBILI	1	13	21	0
HALUNGU	3	62	55	8
IPUNGA	1	20	25	0
IYULA	2	34	45	0
MLANGALI	2	36	45	9
RUANDA	2	26	45	0
ITUMPI	1	20	15	5
MLOWO	2	77	86	0
Total	40	887	1037	59

Availability of Public Secondary School's Teachers by Qualification and Ward, Mbozi Council; 2015

Ward	Number of Teachers with											
	Diploma			Degree			Masters			Others		
	Male	Female	Total	Male	Female	Total	Male	Female	Total	Male	Female	Total
HASANGA	11	5	16	12	21	33	0	0	0	0	0	0
HEZYA	4	1	5	7	4	11	0	0	0			
ICHENJEZYA	0	0	0	0	0	0	0	0	0			
Igamba	21	11	32	25	12	37	1	0	1			
IHANDA	5	6	11	13	12	25	0	0	0			
ILOLO	4	7	11	10	18	28	1	1	2			
Isansa	3	1	4	16	9	25	0	0	0			
Itaka	11	2	13	11	5	16	1	0	1			0
KILIMAMPIMBI	2	2	4	10	1	11	0	0	0			0
MAGAMBA	5	2	7	16	14	30						0

MSIA	5	6	11	5	3	8	0	0	0			0
MYOVIZI	5	2	7	16	14	30						0
Bara	8	3	11	14	5	19	0	0	0			0
Idiwili	4	3	7	6	6	12	1	1	2			0
HASAMBA	9	8	17	15	5	20	1	–	1	0	0	0
ISANDULA	8	3	11	10	2	12	0	0	0	0	0	0
NANYALA	7	3	10	10	6	16			0	0	0	0
SHIWINGA	11	1	12	15	4	19	0	0	0	0	0	0
VYWAWA	6	4	10	24	25	49	1	0	1	0	0	0
WASA	13	1	14	21	9	30	0	0	0	0	0	0
NAMBINZO	14	3	17	19	5	24	0	0	0	0	0	0
NYIMBILI	5	2	7	10	4	14	0	0	0	0	0	0
HALUNGU	13	5	18	25	11	36	1	0	1	0	0	0
IPUNGA	6	1	7	13	5	18	0	0	0	0	0	0
IYULA	8	3	11	24	9	33	1	0	1	0	0	0
MLANGALI	14	3	17	23	5	28	0	0	0	0	0	0
RUANDA	11	3	14	22	8	30	0	1	1	0	0	0
ITUMPI	4	1	5	8	2	10	0	0	0	0	0	0
MLOWO	17	11	28	28	27	55	1	1	2	1	0	1
Total	234	103	337	428	251	679	9	4	13	1	0	1

Number of Science and Arts Teachers in Public Secondary Schools by Ward, Mbozi Council; 2015

Ward	Number of Teachers							
	Available Teachers Teaching Science subjects			Required Science Teachers	Available Teachers Teaching Arts subjects			Required Arts Teachers
	Male	Female	Total		Male	Female	Total	
HASANGA	2	1	3	15	20	26	46	28
HEZYA	2	0	2	5	9	5	14	6
ICHENJEZYA	0	0	0	0	0	0	0	0
Igamba	11	0	11	16	38	26	64	24
IHANDA	5	3	8	17	15	15	30	21
ILOLO	3	3	6	13	12	23	35	14
Isansa	3	2	5	13	16	8	24	15

Itaka	3	2	5	7	20	7	27	22
KILIMAMPIMBI	2	1	3	5	10	2	12	6
MAGAMBA	4	2	6	10	17	13	30	11
MSIA	3	1	4	11	10	5	15	3
MYOVIZI	4	4	6	10	17	13	30	11
Bara	3	3	6	14	19	5	24	16
Idiwili	2	0	2	6	9	10	19	12
HASAMBA	2	0	2	10	23	13	36	13
ISANDULA	4	0	4	5	14	5	19	8
NANYALA	3	2	5	11	14	7	21	12
SHIWINGA	6	1	7	9	20	4	24	18
VYWAWA	5	7	12	33	29	23	52	46
WASA	4	2	6	17	30	8	38	23
NAMBINZO	6	0	6	21	27	8	35	24
NYIMBILI	4	0	4	5	11	6	17	9
HALUNGU	6	3	9	10	33	12	45	1
IPUNGA	3	1	4	6	16	5	21	18
IYULA	5	0	5	9	27	12	39	9
MLANGALI	6	1	7	14	30	7	37	22
RUANDA	7	1	8	9	26	11	37	17
ITUMPI	2	0	2	9	10	3	13	11
MLOWO	11	2	13	36	36	37	73	41
Total	121	42	161	346	558	319	877	461

Availability of Teachers Houses in Public Secondary Schools by Ward, Mbozi Council; 2015

Ward	No. of Schools	Number of Houses				
		Required	Available	Deficit	Percent Deficit	Ranking Deficit
HASANGA	1	31	1	30	96.77419355	
HEZYA	1	11	2	9	81.81818182	
ICHENJEZYA	0	0	0	0	#DIV/0!	
Igamba	3	71	5	66	92.95774648	
IHANDA	1	38	4	34	89.47368421	
ILOLO	1	27	1	26	96.2962963	
Isansa	1	28	5	23	82.14285714	
Itaka	2	29	3	26	89.65517241	
KILIMAMPIMBI	1	11	1	10	90.90909091	

MAGAMBA	1	21	0	21	100	
MSIA	1	26	0	26	100	
MYOVIZI	1	21	0	21	100	
Bara	2	36	8	28	77.77777778	
Idiwili	1	26	3	23	88.46153846	
HASAMBA	1	23	1	22	95.65217391	
ISANDULA	1	13	1	12	92.30769231	–
NANYALA	1	23	1	22	95.65217391	
SHIWINGA	1	31	1	30	96.77419355	97
VYWAWA	1	79	1	78	98.73417722	
WASA	2	39	8	20	51.28205128	150
NAMBINZO	2	29	7	22	75.86206897	
NYIMBILI	1	13	5	8	61.53846154	
HALUNGU	3	57	1	56	98.24561404	56
IPUNGA	1	18	2	16	88.88888889	80
IYULA	2	34	7	27	79.41176471	
MLANGALI	2	16	23	7	43.75	
RUANDA	2	26	1	25	96.15384615	
ITUMPI	1	30	1	29	96.66666667	
MLOWO	2	77	0	77	100	
Total	40	884	93	794	#DIV/0!	383

Availability of Classrooms in Public Secondary Schools by Ward; Mbozi Council; 2015

Ward	No. of Schools	Number of Classrooms				
		Required	Available	Deficit	Percent Deficit	Ranking Deficit
HASANGA	1	19	19	0	0.00	0
HEZYA	1	12	6	6	50.00	
ICHENJEZYA	0	0	0	0	#DIV/0!	
Igamba	3	32	32	0	0.00	
IHANDA	1	21	21	0	0.00	
ILOLO	1	16	18	0	0.00	
Isansa	1	16	18	0	0.00	
Itaka	2	15	10	5	33.33	
KILIMAMPIMBI	1	8	5	3	37.50	
MAGAMBA	1	12	21	-9	-75.00	
MSIA	1	16	10	6	37.50	

MYOVIZI	1	12	21	-9	-75.00	
Bara	2	24	23	1	4.17	
Idiwili	1	12	9	3	25.00	
HASAMBA	1	17	20	0	0.00	
ISANDULA	1	6	12	0	0.00	–
NANYALA	1	16	11	5	31.25	
SHIWINGA	1	12	10	2	16.67	
VYWAWA	1	27	27	0	0.00	
WASA	2	26	16	10	38.46	
NAMBINZO	2	24	22	2	8.33	
NYIMBILI	1	10	18	0	0.00	
HALUNGU	3	28	30	0	0.00	0
IPUNGA	1	10	10	0	0.00	0
IYULA	2	21	21	0	0.00	
MLANGALI	2	16	23	7	43.75	0
RUANDA	2	16	13	3	18.75	
ITUMPI	1	12	13	0	0.00	
MLOWO	2	45	39	6	13.33	
Total	40	501	498	41	8.18	0

Availability of Pit Latrine in Public Secondary Schools by Sex and Ward; Mbozi Council 2015

Ward	No. of Schools	Total students			Number of Pit Latrine												
					Required			Available			Deficit			Percent Deficit			Ward Ranking by Deficit
		B	G	T	B	G	T	B	G	T	B	G	T	B	G	T	
HASAN GA	1	288	346	636	12	18	30	11	18	29	1	0	1	9	0	9	

MYOVI ZI	MSIA	MAGA MBA	KILIMA MPIMBI	Itaka	Isansa	ILOLO	IHAND A	igamba	ICHENJ EZYA	HEZYA
1	1	1	1	2	1	1	1	3	0	1
16	96	16	72	219	251	0	383	422	0	94
18	139	18	82	245	359	0	450	578	0	121
32	235	32	154	464	610	0	833	1000	0	215
8	4	8	3	9	11	16	16	17	0	4
8	7	8	4	12	18	14	23	29	0	6
16	11	16	7	21	29	30	39	46	0	10
8	6	8	3	5	8	8	13	20	0	4
8	6	8	3	9	0	8	13	28	0	4
16	12	16	6	14	8	16	26	48	0	8
8	0	8	0	4	3	8	3	3	0	0
8	1	8	1	3	18	6	10	1	0	2
16	1	16	1	7	21	14	13	4	0	2
				44	27%	50	19%	18%	0	
				25	100%	42	44%	13%	0	30%
				69	127%	92	34%	31%	0	30%
				7		86			0	

HALUN GU	NYIMBI LI	NAMBIN ZO	WASA	VYAWAW A	SHIWIN GA	NANYA LA	ISANDU LA	HASAM BA	Idiwili	Bara
3	1	2	2	1	1	1	1	1	1	2
426	98	273	310	430	190	138	115	299	146	250
573	144	255	372	703	231	163	92	364	212	273
999	242	528	682	1133	421	301	207	663	358	523
26	4	11	13	17	8	8	5	12	8	11
34	7	13	19	35	12	10	5	18	10	14
60	11	24	32	52	20	18	10	30	18	25
16	4	10	16	8	3	5	7	8	4	13
22	4	11	16	18	3	5	3	12	12	12
38	8	21	32	26	6	10	10	20	16	25
10	0	1	0	9	5	3	0	4	4	2
12	3	2	1	17	9	5	2	6	0	1
22	3	3	1	26	14	8	2	10	4	3
62	0	9	0%	53%	63	38%	0	33		
54	27	15	20%	49%	75	58%	40%	44		
57	27	24	0.2	1.02	138	0.96	0.4	77		
22			1		70					

Total	MLOWO	ITUMPI	RUANDA	MLANGALI	IYULA	IPUNGA
40	2	1	2	2	2	1
6359	838	192	187	250	360	0
7971	918	267	232	310	506	0
14328	1756	459	419	560	866	0
305	34	8	8	10	14	0
442	46	13	13	16	25	5
754	80	21	21	26	39	12
251	15	12	7	9	16	4
285	18	10	7	9	16	2
536	33	22	14	18	32	6
98	19	0	1	1	0	1
174	28	3	6	7	9	5
272	47	3	7	8	9	6
#DIV/0!	58	#DIV/0!	0%	10	0	20
#DIV/0!	60	0	34%	44	56	71.4
#DIV/0!	58.8	#DIV/0!	0	44	56	91.4
246.8	60.8	0	0	0	0	0

Availability of dormitories/hostels in Public Secondary Schools by Ward, Mbozi Council; 2015

Ward	No. of Schools	Number of Dormitories/hostels				
		Required	Available	Deficit	Percent Deficit	Ranking Deficit
HASANGA	1	0	0	0	0	0
HEZYA	1	2	0	2	100	
ICHENJEZYA	0	0	0	0	0	
Igamba	3	6	0	6	100	
IHANDA	1	2	0	2	100	
ILOLO	1	0	0	0	0	0
Isansa	1	2	0	2	100	
Itaka	2					

KILIMAMPIMBI	1	1	0	1		
MAGAMBA	1	3	1	2		
MSIA	1	0	0	0		
MYOVIZI	1	3	1	2		
Bara	2	4	0	4		
Idiwili	1	1	0	1		
HASAMBA	1	2	0	2	100	
ISANDULA	1	2	1	1	50	
NANYALA	1	2		2	100	
SHIWINGA	1	2	0	2	100	100
VYWAWA	1	3	3	3	100	
WASA	2	3	1	2	66.66666667	
NAMBINZO	2	4	0	4	100	
NYIMBILI	1	2	1	1	50	
HALUNGU	3	6	0	6	100	6
IPUNGA	1	2	0	2	100	100
IYULA	2	4	0	4	100	
MLANGALI	2	4	1	3	75	
RUANDA	2	4	0	4	100	
ITUMPI	1	2	0	2	100	
MLOWO	2	4	0	4	100	
Total	40	70	9	64	91.42857143	206

Availability of Libraries in Public Secondary Schools by Ward; Mbozi Council; 2015

Ward	No. of Schools	Number of Library				
		Required	Available	Deficit	Percent Deficit	Ranking Deficit
HASANGA	1	0	0	0	0	0
HEZYA	1	1	0	1	100%	
ICHENJEZYA	0	0	0	0	0	
Igamba	3	3	0	3	100%	
IHANDA	1	1	0	1	100%	
ILOLO	1	1	0	1	100	
Isansa	1	1	0	1	100%	
Itaka	2	2		2		
KILIMAMPIMBI	1	1	0	1		

MAGAMBA	1	1		1		
MSIA	1	1	1	0		
MYOVIZI	1	1		1		
Bara	2	2	1	1		
Idiwili	1	1	0	1		
HASAMBA	1	1	0	1	100	
ISANDULA	1	1	0	1	100%	
NANYALA	1	1		1	100%	
SHIWINGA	1	1	0	1	100	100
VYWAWA	1	1	0	1	100%	
WASA	2	3	1	2	100%	
NAMBINZO	2	2	0	2	100	
NYIMBILI	1	1	0	1	100%	
HALUNGU	3	5	1	4	80	4
IPUNGA	1	1	0	1		100
IYULA	2	2	1	1	50%	
MLANGALI	2	2	0	2	100	
RUANDA	2	2	0	2	100%	
ITUMPI	1	1	0	1	100	
MLOWO	2	2	0	2	100	
Total	40	42	5	37	790.5	204

Availability of Tables and chairs in Public Secondary Schools by Ward, Mbozi Council; 2015

Ward	No. of Schools	Number of Tables and chairs								
		Required		Available		Deficit		Percent Deficit		Ranking Deficit
		Tables	Chairs	Tables	Chairs	Tables	Chairs	Tables	Chairs	
HASANGA	1	636	636	640	640	4	4	0.625	0.625	0
HEZYA	1	233	233	264	264	31	31	11.74242424	11.74242424	
ICHENJEZYA	0	0	0	0	0	0	0	0	0	
Igamba	3	1018	1018	1058	1058	40	40	3.780718336	3.780718336	
IHANDA	1	833	833	833	833	0	0	0	0	
ILOLO	1	621	621	660	660	0	0	0	0	0
Isansa	1	610	610	630	630	0	0	0	0	
Itaka	2	475	475	621	638					

KILIMAMPIM BI	1	154	154	200	200					
MAGAMBA	1	495	495	600	605					
MSIA	1	235	235	299	299					
MYOVIZI	1	495	495	600	605					
Bara	2	848	848	920	925					
Idiwili	1	368	400	358	424					
HASAMBA	1	663	663	744	712	0	0	0	0	
ISANDULA	1	237	237	244	244	0	0	0	0	
NANYALA	1	301	301	712	712			0	0	
SHIWINGA	1	421	421	480	480	0	0	0	0	0
VYWAWA	1	1035	980	1012	55	23	6	2.272727273	10.90909091	
WASA	2	602	602	602	602	0	0	0	0	
NAMBINZO	2	528	528	563	563	0	0	0	0	
NYIMBILI	1	242	242	450	450	0	0	0	0	
HALUNGU	3	728	728	716	728	12	0	0.016	0	12
IPUNGA	1	244	244	246		250	0	0	0	0
IYULA	2	866	866	796	796	0	0	0%	0%	
MLANGALI	2	580	580	582	582	2	2			
RUANDA	2	422	422	489	502	0	0	0%	0%	
ITUMPI	1	192	192	398	398	61	61	13%		
MLOWO	2	1756	1756	1683	1763	0	0	0	0	
Total	40	15838	15815	17400	16368	423	144	2.431034483	0.879765396	12

Availability of Laboratories in Public Secondary Schools by Ward; Mbozi Council; 2015

Ward	No. of Schools	Number of Laboratories				
		Required	Available	Deficit	Percent Deficit	Ranking Deficit
HASANGA	1	3	3	0	0	0
HEZYA	1	3	3	0	0	
ICHENJEZYA	0	0	0	0	#DIV/0!	
Igamba	3	9	2	7	77.77777778	
IHANDA	1	3	3	0	0	
ILOLO	1	3	3	0	0	0
Isansa	1	3	3	0	0	
Itaka	2	6	6	0		
KILIMAMPIMBI	1	3	3	0		
MAGAMBA	1	3				
MSIA	1	3	3	0		

MYOVIZI	1	3	3	0		
Bara	2	6	1	5		
Idiwili	1	3	3	0		
HASAMBA	1	3	3	0	0	
ISANDULA	1	3	3	0	0	
NANYALA	1	3	3		0	
SHIWINGA	1	3	3	0	0	100
VYWAWA	1	3	3	0	0	
WASA	2	6	6	0	0	
NAMBINZO	2	6	0	6	100	
NYIMBILI	1	3	3	0	0	
HALUNGU	3	9	9	0	0	0
IPUNGA	1	3	3	0		0
IYULA	2	6	6	0	0	0
MLANGALI	2	6	6	0	0	0
ITUMPI	2	3	3	0	0	0
RUANDA	1	6	6	0	0	0
MLOWO	2	6	6	0	0	0
Total	40	120	99	18	15	100

d) Health Services:-

The preventive and curative services are the major services being provided by the health sector through the existing health facilities as shown by the table below:

Availability of Health Facilities by Ownership; Mbozi District Council, 2015

Ward	Type of Facility					
	Hospitals		Health Centres		Dispensaries	
	Govt	Non Govt	Govt	Non Govt	Govt	Non Govt
BARA	0	0	0	0	3	1
HALUNGU	0	0	0	0	4	0
HASAMBA	0	0	0	0	1	1
HASANGA	0	0	0	0	0	0
HEZYA	0	0	0	0	2	0
ICHENJEZYA	0	0	0	1	0	1
IDIWILI	0	0	0	0	2	0
IGAMBA	0	1	0	0	3	0
IHANDA	0	0	0	0	2	1

ILOLO	0	0	0	0	0	0
IPUNGA	0	0	0	0	2	0
ISANDULA	0	0	0	0	1	0
ISANSA	0	0	1	0	2	0
ITAKA	0	0	1	0	2	0
ITUMPI	0	0	0	0	3	0
IYULA	0	0	1	0	4	0
KILIMAPIMBI	0	0	0	0	2	0
MAGAMBA	0	0	0	0	2	0
MLANGALI	0	0	0	0	2	0
MLOWO	0	0	0	0	2	2
MSIA	0	0	0	0	2	0
MYOVIZI	0	0	0	0	3	1
NAMBINZO	0	0	0	1	4	0
NANYALA	0	0	0	0	3	0
NYIMBILI	0	0	0	0	4	0
RUANDA	0	0	0	0	2	0
SHIWINGA	0	0	0	0	1	0
VWAWA	1	0	0	1	0	1
WASA	0	0	0	0	1	0
Total	1	1	3	3	59	8

Estimates of Basic Health Indicators; Mbozi Council; 2002, 2005, 2009 2012 and 2015

Year	Estimated IMR	Estimated U5MR	Estimated MMR	Estimated Prenatal Mortality Rate*	Estimated Neonatal Mortality Rate**
2002	0	0	0	0	0
2005	0	0	0	0	0
2009	0	0	0	0	0
2012	0	0	0	0	0
2015	6	1	110	13.1	3

*Deaths of children which occur from 7 months pregnancy (28 weeks) up to delivery

**Deaths of children which occur from day 0 after delivery up to 28 days

List of Ten Most Commonly Reported Causes of Morbidity (Out Patients Only), Mbozi Council; 2011 and 2015

Number	2011		2015	
	Disease	Number of Occurrences	Disease	Number of Occurrences
1			Upper respiratory infection	34,930
2			Diarrhea	16,113
3			Pneumonia	12,877
4			Skin Infection	11,199
5			Malaria	5,819
6			Urinary tract infection (UTI)	5,446
7			Intestinal worms	3,935
8			Eye disease infection	2,708
9			Surgical Condition	2,202
10			GIT Disease and other non infection	2,142
Total		0	0	97,371

List of Ten Most Commonly Reported Causes of Morbidity (In Patients Only), Mbozi Council; 2011 and 2015

Number	2011		2015	
	Disease	Number of Occurrences	Disease	Number of Occurrences
1	Malaria	2843	Pneumonia:	2,066
2	Pneumonia	1887	Malaria:	1,158
3	Diarrhea	753	Diarrhea:	1,088
4	Acute Respiratory infection	659	Typhoid:	875
5	Anemia	427	Urinary tract Infection (UTI):	452
6	Pelvic inflammatory Disease	257	GIT diseases and other non infectious :	332
7	HIV	257	Upper respiratory infection	328
8	Urinary Tract Infection	166	Road traffic accidents:	287

9	Tuberculosis	136	Low birth weight:	178
10	Bronchial Asthma	115	HIV opportunistic infection:	164
Total		6747	0	6,928

List of the Ten Most Commonly Reported Causes of Mortality (In Patients Only) Mbozi Council; 2011 and 2015

Number	2011		2015	
	Disease	Number of Occurrences	Disease	Number of Occurrences
1	Anemia	35	Pneumonia	84
2	HIV/AIDS	26	HIV & AIDS	70
3	Pneumonia	32	Malaria	40
4	Acute Respiratory Infection	21	Neonatal Asphixia	38
5	Poisoning	20	Hypertension	22
6	Malaria	24	Diarrhea	21
7	Diabetes	4	ARI	19
8	Diarrhea	7	Typhoid	16
9	Hematological Disease	5	Head injury	16
10	Burn	2	Diabetes	15
Total	0	176	0	341

Number of Reported Cases of Communicable Diseases, Mbozi Council; 2013 and 2015

Number	Disease	Number of cases	
		2013	2015
1	Malaria	23,801	6977
2	Acute Respiratory infection	25,744	34930
3	Darrhea	12,777	16113
4	Skin Infection	5,851	11199
5	Intestinal worms	4853	3935
6	Pneumonia	11457	12877
7	Urinary tract infection	1835	5446

8	Eye infection	3987	2708
9	Sexual Transmitted Disease (STI)	4862	4389
10	Tuberculosis	136	140
Total		95303	98714

e) Water.

Number and Type of Rural Water Sources by Ward, Mbozi District Council; 2015

Ward	Charcoal dams			Spring			Shallow Well			Rain water Harvest Tanks			Bore holes			River water		Lake water	Dam		Piped Scheme		
	W	N	W	W	N	W	W	N	W	W	N	W	W	N	W	P	S		P	S	W	N	W
HEZYA	0		0	16		16	12		5	0		0	0		0	8	3	0	0	0	12		0
Igamba	28		5	90		20	242		0	12		0	29		39	6	0	0	0	0	0		0
IHANDA	0		0	64		20	1050		0	1		0	0		0	10	3	0	3	0	0		0
ISANSA	23		0	76		8	284		0	4		0	10		0	1	6	0	0	0	6		0
Itaka	3		0	27		0	23		0	3		0	3		2	5	10	0	0	0	0		0
KILIMAMPIMBI	0		0	7		0	31		0	0		0	1		0	6	0	0	0	0	0		0
MAGAMBA	0		0	4		0	3		6	0		0	0		0	3	5	0	0	0	0		0
MSIA	4		0	27		0	110		0	5		1	0		0	4	11		5	2	0		0
MYOVIZI	0		0	48		0	31		68	0		0	0		0	3	5	0	0	0	0		0
Bara	0		0	34		0	143		0	1		0	0		18	1	8	0	0	0	0		0
Idiwili	0		0	49		5	80		29	3		0	0		0	6	3	0	0	0	0		0
ISANDULA	1		0	24		0	19		30	2		0	0		0	4	0	0	0	0	0		7
NANYALA	0		0	4		0	4		0	8		0	4		9	7	0	0	0	0	55		0
SHIWINGA	0		0	5		0	77		10	0		0	0		0	3	0	0	0	0	0		0

WASA	0	0	0	0	30	0	0	0	0	1	0	0	0	0	0
NAMBINZO	0	0	0	63	0	123	0	0	3	1	1	2	1	0	0
NYIMBILI	0	0	0	8	418	25	0	0	0	0	0	0	0	0	0
HALUNGU	0	0	0	21	0	1229	0	0	1	0	108	0	0	4	10
IPUNGA	0	0	0	33	0	198	0	0	0	0	0	0	0	12	9
IYULA	0	16	0	0	0	18	51	0	0	0	0	0	0	5	5
MLANGALI	0	0	0	20	0	142	41	0	0	0	0	0	0	10	2
RUANDA	0	0	0	12	3	32	27	1	0	0	0	0	0	7	8
ITUMPI	7	0	73	0	0	0	1	0	2	1	20	0	0	6	0
Total	66	21	749	520	3904	329	45	3	159	69	111	130	0	8	2
Note: W= Working, NW= Not Working, P=Permanent, S=Seasonal															

Number and Type of Water Delivery Technology Used in Rural Water Schemes by Ward, Mbozi Council; 2015

Ward	Type of Technology										Total	
	Wind Mill		Electricity Pump		Diesel Pump		Hand Pump		Gravity Piped			
	W	NW	W	NW	W	NW	W	NW	W	NW	W	NW
HEZYA	0	0	0	0	0	0	12	30	12	0	2	0
Igamba	0	0	2	0	2	0	29	37	95	0	3	1
IHANDA	0	0	4	0	0	0	18	70	96	20	2	1
Isansa	0	0	0	0	6	0	6	60	93	0	2	1
Itaka	0	0	0	0	0	0	59	39	42	0	1	1
KILIMAMPIMBI	0	0	0	0	0	0	15	23	13	0	1	1
MAGAMBA	0	0	0	0	0	0	26	46	56	0	1	1
MSIA	0	0	0	0	0	0	0	21	42	0	1	1
MYOVIZI	0	0	0	0	0	0	26	56	56	0	1	1
Bara	0	0	0	0	1	0	24	16	43	0	1	1
Idiwili	0	0	0	0	0	0	72	29	58	5	2	0
ISANDULA	0	0	1	0	0	0	12	39	24	0	2	1

NANYALA	0	0	0	0	0	0	6	7	66	0	1	1
SHIWINGA	0	0	0	0	0	0	32	10	8	0	2	0
WASA	0	0	0	0	0	0	6	60	40	0	1	1
NAMBINZO	0	0	0	0	0	0	12	34	74	0	1	1
NYIMBILI	0	0	0	0	0	0	245	15	12	9	2	0
HALUNGU	0	0	1	0	0	0	20	18	34	0	3	0
IPUNGA	0	0	0	0	0	0	27	32	51	3	1	1
IYULA	0	0	0	0	0	0	77	51	26	0	2	0
MLANGALI	0	0	1	0	0	0	142	0	41	32	3	0
RUANDA	0	0	0	0	0	0	26	32	34	3	2	0
ITUMPI	0	0	0	0	1	0	38	43	94	0	2	1
Total	0	0	9	0	10	0	930	768	1110	72	39	15

W=Working, NW=Not working

Percentage of Rural Population Served with Clean Water by Ward, Mbozi Council; 2015

Ward	Total Rural Population	Population Served with Clean Water	Percent Population Served with Clean Water
HEZYA	8710	5441	62.4684271
Igamba	25886	19282	74.48814031
IHANDA	21335	18335	85.93859855
Isansa	18122	8,122	44.81845271
Itaka	20360	15318	75.23575639
KILIMAMPIMBI	6770	4100	60.56129985
MAGAMBA	15738	1300	8.260261787
MSIA	12,409	8823	71.101.61979
MYOVIZI	15738	1300	8.260261787
Bara	20106	9100	45.26012136
Idiwili	12,118	11,000	90.77405512
ISANDULA	8453	4203	49.72199219
NANYALA	8914	1533	17.19766659
SHIWINGA	8802	6834	77.64144513
WASA	10850	7478	68.92165899
NAMBINZO	39446	12324	31.24271156
NYIMBILI	13898	13525	97.3161606
HALUNGU	30782	12946	42.05704633
IPUNGA	7981	5586	69.99122917
IYULA	18666	11,999	64.28265295
MLANGALI	15636	15100	96.5720133

RUANDA	7883	5820	73.82976024
ITUMPI	11265	8263	73.35108744
Total	347471.409	207732	59.7839116

Number of Water User Groups (WUGs) and Operation and Maintenance Accounts (O&M) by Ward,..Council; 2015

Ward	Number of Groups	WUGs		O&M		Total Funds (TShs) as per 31/12/2015
		Active	Inactive	Operate	Dormant	
HASANGA	0	0	0	0	0	0
HEZYA	17	12	5	12	5	562000
ICHENJEZYA	2	2	0	0	0	0
IGAMBA	1	1	0	1	0	182,000
IHANDA	0	0	0	0	0	0
ILOLO	0	0	0	0	0	0
ISANSA	0	0	0	0	0	0
Itaka	0	0	0	0	0	0
KILIMAMPIMBI	0	0	0	0	0	0
MAGAMBA	0	0	0	0	0	0
MSIA	4	0	4	0	4	
MYOVIZI	0	0	0	0	0	0
Bara	1	1	0	1	0	170,000
Idiwili	0	0	0	0	0	0
HASAMBA	0	0	0	0	0	0
ISANDULA	0	0	0	0	0	0
NANYALA	64	40	24	0	0	48,000
SHIWINGA	0	0	0	0	0	0
VWAWA	0	0	0	0	0	0
WASA	0	0	0	0	0	0
NAMBINZO	0	0	0	0	0	0
NYIMBILI	0	0	0	0	0	0
HALUNGU	0	0	0	0	0	0
IPUNGA	1	1	0	0	0	0
IYULA	0	0	0	0	0	0
MLANGALI	9	0	9	0	0	0
RUANDA	1	1	0	0	0	0
MLOWO	0	0	0	0	0	0
ITUMPI	0	0	0	0	0	0
Total	100	58	42	14	9	962,000

Number of Rural Village Water Committees, Village Water Funds and Funds in the VWCs by Ward and Village; Mbozi Council as at 31.12 2015

Ward	Village	Village Water Committees Members			Village Water Fund (VWF)/Water Users Group (WUG)	Total funds in Tshs
		Male	Female	Total members		
HASANGA	0	0	0	0	0	0
HEZYA	HARAKA	3	4	7	0	12000
	HEZYA	4	4	8	0	250000
	NAMWANGWA	3	0	3	0	300000
	IZUMBI	0	0	0	0	0
IGAMBA	7	36	26	62	0	0
IHANDA	0	0	0	0	0	0
ILOLO	0	0	0	0	0	0
Isansa	0	21	21	42	0	700,000
ICHENJEZYA	0	0	0	0	0	0
Itaka	Mboji	4	3	7	0	0
	Itaka	4	4	8	0	0
	Hamwelo	4	4	8	0	0
	Itentula	3	3	6	0	2,000
KILIMAMPIMBI	0	0	0	0	0	0
MAGAMBA	0	0	0	0	0	0
MSIA	MSIA	5	4	9	0	0
	IBEMBWA	4	4	8	0	0
	IGANDUKA	4	4	8	0	0
	WELU I	4	4	8	0	0
MYOVIZI	0	0	0	0	0	0
BARA	3	12	8	20	0	105000
IDIWILI	Ilulu	3	3	6	0	0
HASAMBA	0	0	0	0	0	0
ISANDULA	0	0	0	0	0	0
NANYALA	NANYALA	3	4	7	0	0
	LUSUNGO	4	3	7		0
	SONGWE	3	3	6		48,000
SHIWINGA	0	0	0	0	0	0
VWAWA	0	0	0	0	0	0
WASA	0	0	0	0	0	0
NAMBINZO	0	0	0	0	0	0
NYIMBILI	0	0	0	0	0	0
HALUNGU	0	0	0	0	0	0

IPUNGA	IPANZYA	4	3	7	0	0
	MPELA	4	3	7	0	0
	IPUNGA	4	3	7	0	0
	IPAPA	4	3	7	0	0
IYULA	0	0	0	0	0	0
MLANGALI	MBEWE	5	3	8	0	0
	LUKULULU	4	3	7	0	0
RUANDA	Lumbila	6	3	9	0	0
MLOWO	0	0	0	0	0	0
ITUMPI	Nsenga	3	2	5	0	180,000
	Itumpi	3	2	5	0	0
	Iyenga	4	3	7	0	0
	Sambewe	4	4	8	0	0
Total	45	169	138	307	0	1597000

* VFWs = Village Water Funds, WUG = Water Users Groups

Number of Water Schemes by Type of Technology by Ward; Mbozi District Council; 2015

Ward	Type of Technology										Total	
	Wind Mill		Electricity Pump		Diesel Pump		Hand Pump		Gravity Piped			
	W	NW	W	NW	W	NW	W	NW	W	NW	W	NW
HASANGA	0	0	3	0	10	0	0	9	75	0	3	1
ICHENJEZYA	0	0	3	0	0	0	1	0	1	0	3	0
ILOLO	0	0	2	0	0	0	3	1	2	0	3	0
VWAWA	0	0	4	0	2	0	0	2	1	0	3	1
HASAMBA	0	0	7	5	0	0	84	12	5	4	3	0
MLOWO	0	0	1	0	0	0	10	2	15	0	3	0
Total	0	0	20	5	12	0	98	26	99	4	18	2

1.8 CROSS CUTTING ISSUES

(a) Environment conservation.

Major areas of environmental conservation in the District involve the conservation of the followings;

- Forests both natural and planted forests.
- Water catchments areas from the upper land areas to low land areas
- Wetland management and
- Sustainable urban development

(i) Forests:

Forests covers a total of 61,406.3 Ha of which 5,306.48 Ha are natural forest and 6,199.8 Ha are planted trees. The total areas of 9,784.5 Ha is being conserved as National and District forest reserves while 51,621.81 Ha is being conserved by the village through the assistance of “participatory forest management” programme.

Forest conservation and afforestation is one of the priorities of the District for sustainable development. This is envisaged in all development plans of the District. For the previous three years, the average minimum trees targeted for afforestation was 1,600,000 trees per annum. On average actual trees seedlings and planted trees surpassed the target, and stood at 1,700,000 trees per annum. However, the achievements has been highly affected by low survival rates which stands at 35% implying an average of only 595,000 trees per annum. The low survival rate is mainly attributed by:-

- Low management of the planted trees, thus subjecting them to be affected by insects, fire and animals.
- Occurrence of long dry spell

Besides the efforts being made, the forest sub sector has been affected by:-

- High rate of deforestation
- Bush and forest fire

As an effort to combat the situation, together with afforestation, since 2005 the District embarked on participatory forest management. Achievement obtained so far for 20 pilot villages will be consolidated and expanded in other villages.

(ii) Water catchments areas.

The District has several catchments areas within Iyula and Vwawa division which together with other areas form the sources of major rivers of Nkana, Songwe, Mlowo, Vwawa, Ruanda, Myovizi and Malonji rivers. Most of these sources have been invaded and put under constant cultivation. This together with excessive deforestation has destructed most of water sources (catchment areas) resulting with low water levels or even affecting some of the rivers to be dry most of the seasons. The situation is aggravated by the application of fertilizers and chemicals for agriculture along all levels of water catchments areas resulting to water chemical contaminations. Conservation of these areas will be a priority for this plan.

(iii) Wetland Management.

Of the most wetland area are Songwe, Halungu, and Mlowo rivers. Encroachments towards river banks and sources (catchments) is a major problem. Further pollutions should be prevented and the existing degradation be reduced.

(iv) Sustainable urban development

There are two major urban centers which are growing fast. These are Vwawa and Mlowo. Both urban centres have already been promoted to small urban authorities. Besides those there are also Ihanda, Igamba and Ruanda centers which are rapidly growing to small urban centers. For sustainable developments the development of all centers are being done on planned and surveyed plots. However, most parts of the major three urban centers were developed locally under squatter settlement. While sustainable urban development programmes (SUDP) has been developed for two urban centers of Vwawa and Mlowo still more resources is required for squatters upgrading and provision of essential social and economic services. Likewise more planned settlements and business areas should be developed and allocated to users.

(b) Gender

The relationship between men and woman, able and disabled, Children youth and old aged is of paramount for National harmony and stability and social-economic development. Programme to lessen the burdens of women and empowering them in decision making and effective economic development have been taking place in the former MTEF and will be given more emphasis in 2014/15 - 2018/19 MTEF. It is estimated that most of the females works for more than 12 hours while most male works for only between six (6) to eight (8) hours per day district wise.

Where as good numbers of programmes and resources have been developed for children and youth little has been done to the old age population. The same is also true for people with disabilities. Such a situation will be rectified in this plan.

(c) HIV/AIDS Control:

Based on the 2007/08 survey HIV/AIDS prevalence in the District was 11.9%. The 2010 survey shows that HIV/AIDS prevalence in the district is 7.9%. A number of measures has been undertaken which contributed to the success and these includes establishment of voluntary counseling and testing centers and home based services through mobile clinics.

(d) Good governance:

This involves the rule of law, Community participation in planning and decision making, accountability and transparency. All functions and decision of the council are executed or enforced based on National enactments and bylaws of the council and villages. Community participation is effected though participatory village plans, and through the decisions of various bodies/outstanding committees at all levels from the village, ward to council levels which constitutes democratically elected members and operates on democratic procedures. The government at all levels is accountable to the

people through submission of plans and reports to those democratic bodies as well as implementing the decision reached by them. All outstanding committee at the District and ward level meet regularly while only 65% of such meetings at the village level meet regularly. Essential financial information being part of it is posted to institutional and public notice boards at all levels.

(e) Tourism

Mbozi district has unique tourism sites; these are:-

- **Geographical tourism:** meteorite commonly known as 'kimondo cha Mbozi' at Ndolezi, Hot water spring, Rift valley scenery at Nanyala.
- **Wild animal tourism:** Red monkey at lyula forests.

Hotels and clubs offer pleasant drinks, meals and entertainment in Vwawa and Mlowo urban centers. However development of the tourism industry is low. The district need local and foreign investors to dwell in and invest on camping sites, hotels, conference facilitates real estates and environmental conservation activities.

1.9 COUNCIL ORGANIZATION STRUCTURE

1.9.1 POLITICAL STRUCTURE

The Administration of the Mbozi District Council (MDC) includes one (1) Council which compose of Eight (4) Divisions, two Township authorities (with a total of 6 wards), twenty three (23) Wards represented by 29 Councilors and 12 special seat/nominated Councilors (Women), 2 Constituencies represented by two (2) Members of Parliament these constitute the Legislative Organ of the Council.

Full Council is the highest decision making organ in the Council; The Council consists of the Three Main Committees, provided under Sec 74 of the Act No. 7/1982:

1. Finance, Administration and Planning Committee.
2. Education, Water and Health Committee.
3. Economic, Works and Environmental Committee.

Fig. No. 1: POLITICAL ORGANIZATION STRUCTURE OF MBOZI DISTRICT COUNCIL

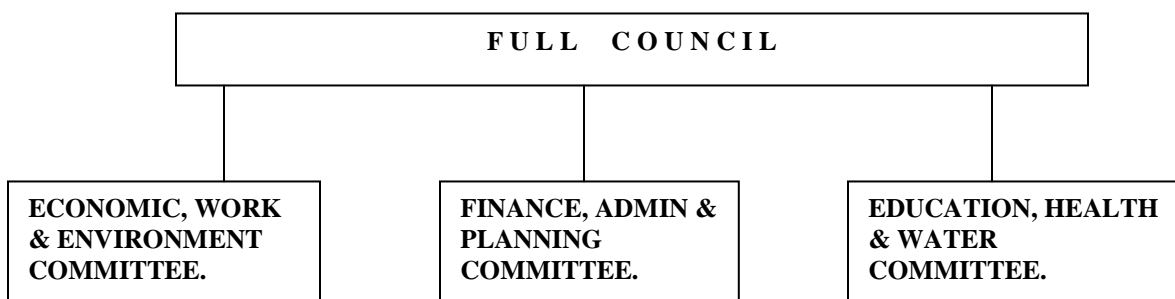
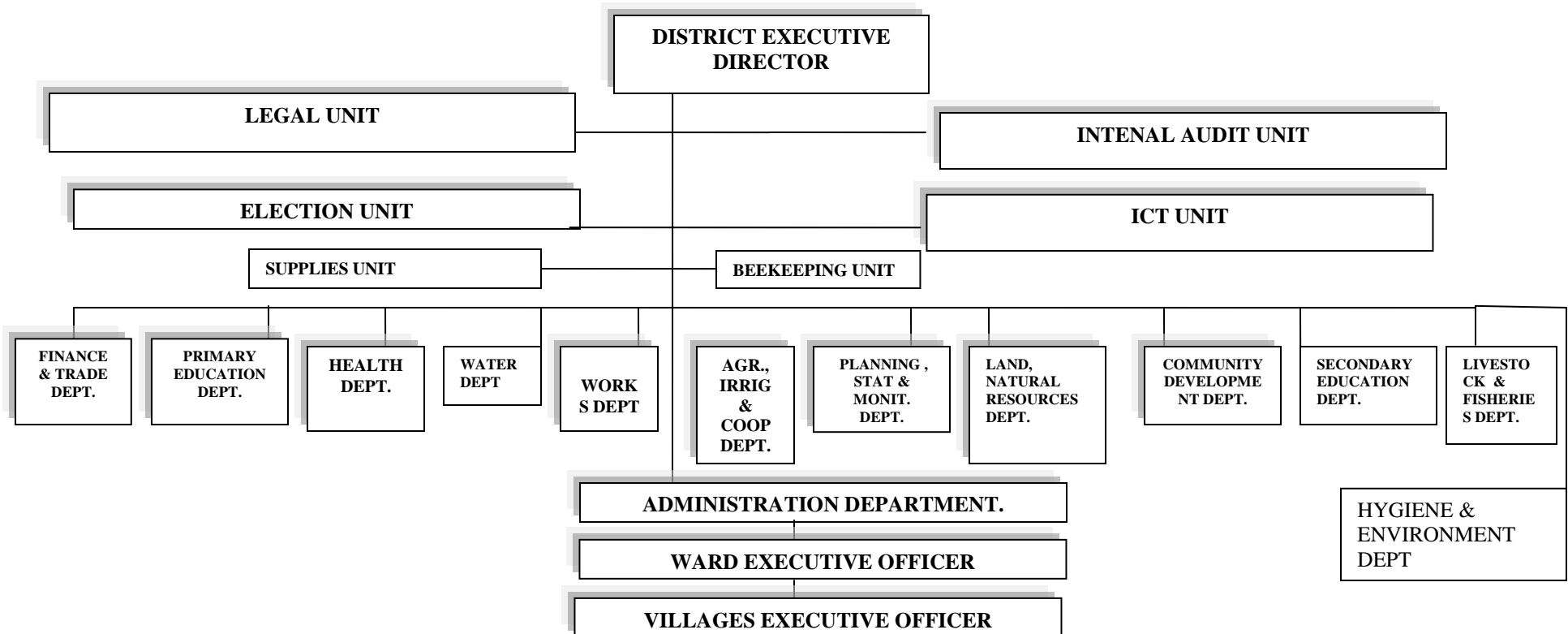


Fig. No 2: ADMINISTRATIVE STRUCTURE OF MBOZI DISTRICT COUNCIL.



On the administration side the district is headed by the Council Director who is assisted by 13 heads of departments. These departments are Administration and Human resources; Finance; Planning, Statistics and Monitoring; Agriculture, Irrigation and Cooperatives; Livestock and fisheries; Community Development and Social Welfare; Works; Land Development and Natural Resources, Hygiene and Environmental conservation; Primary Education; Secondary education, Water; and Health. Apart from the District headquarter the structure goes down to the 29 wards, 121 villages, 665 hamlets. At the ward and Village level the Director is assisted by Ward Executive Officers and Village Executive Officers respectively.